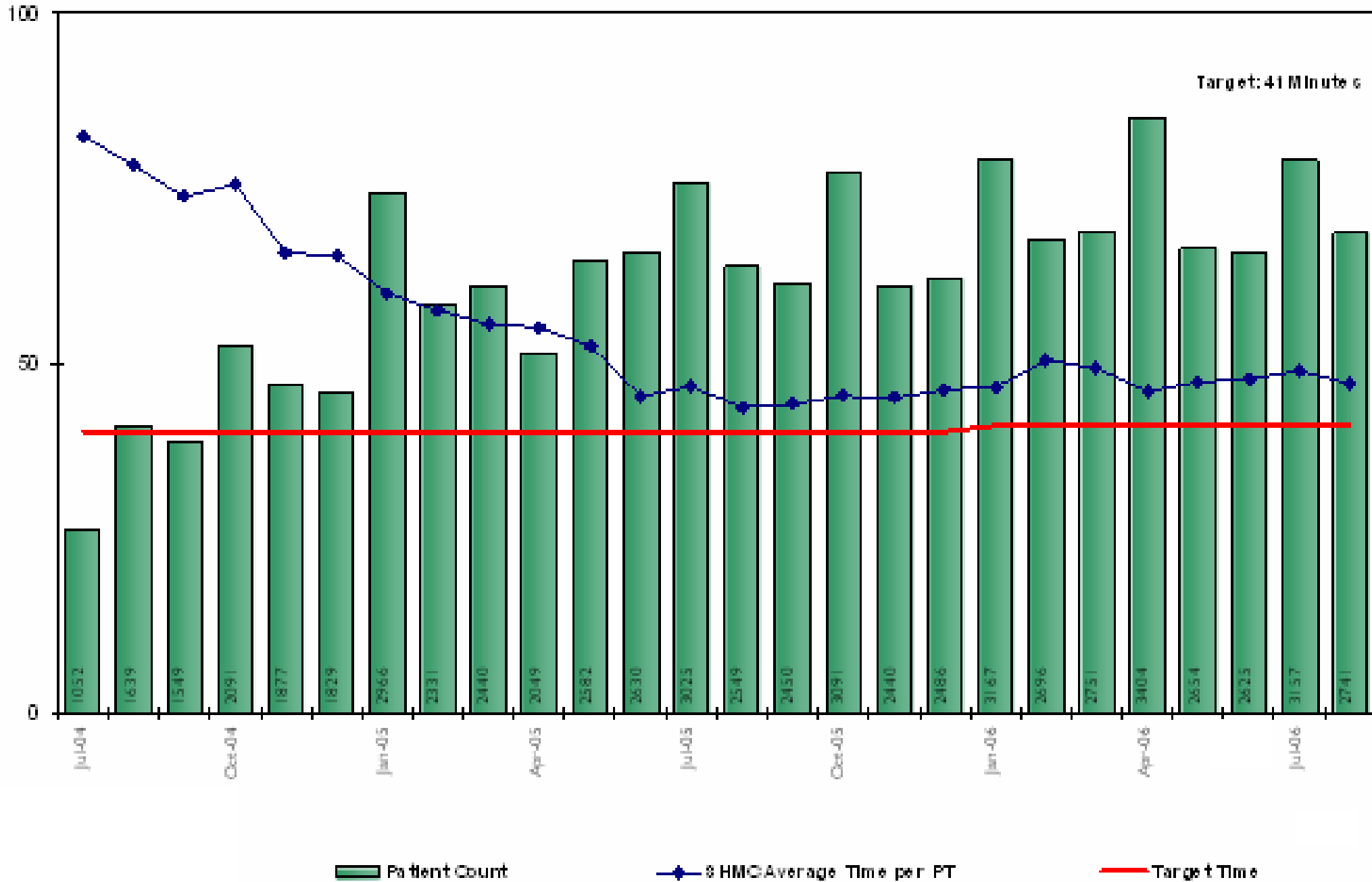


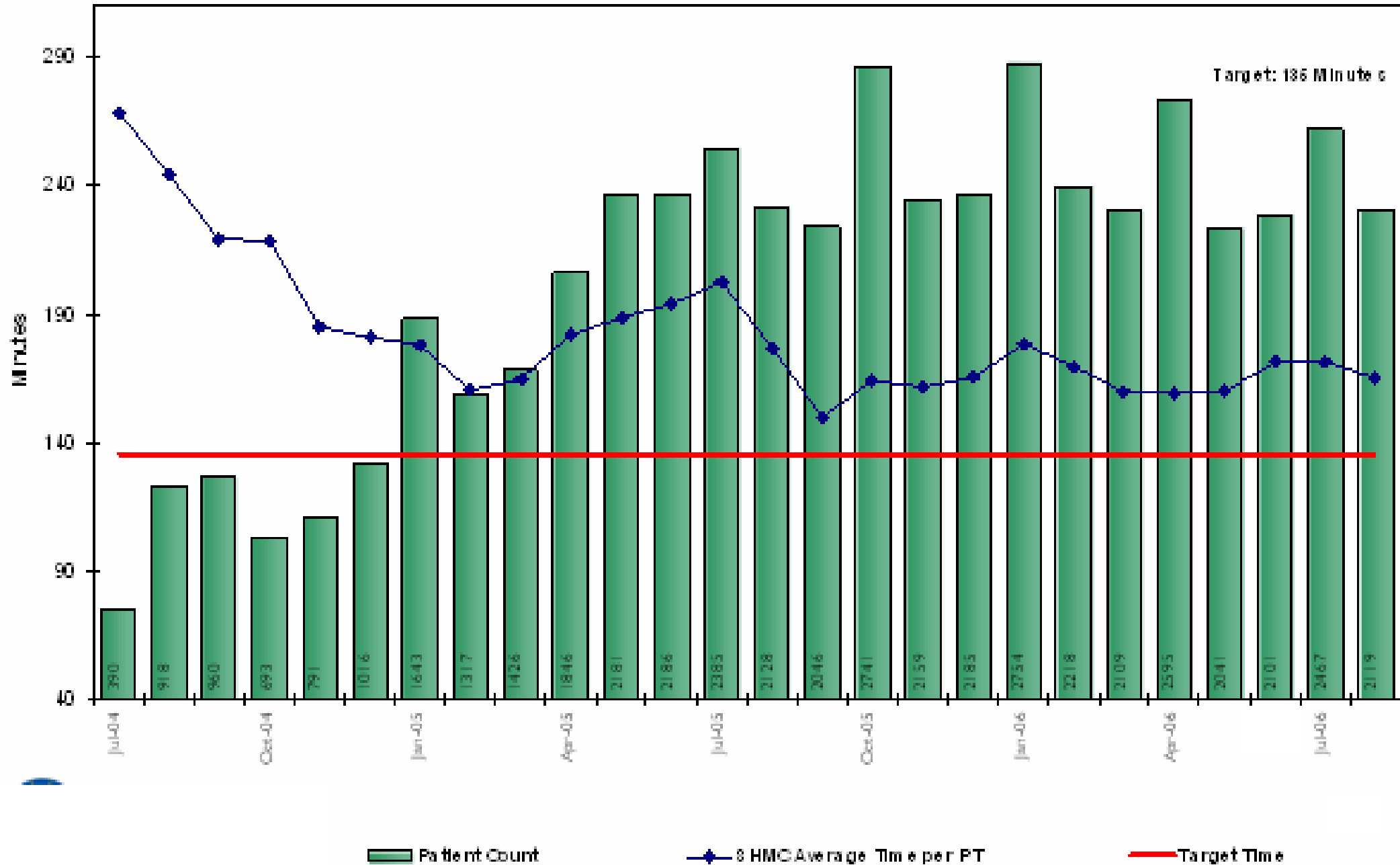
# Inpatient Bed Assignment to Patient Arrival

July 2004 - Aug 2006



# Inpatient Discharge Criteria Met to Bed Ready

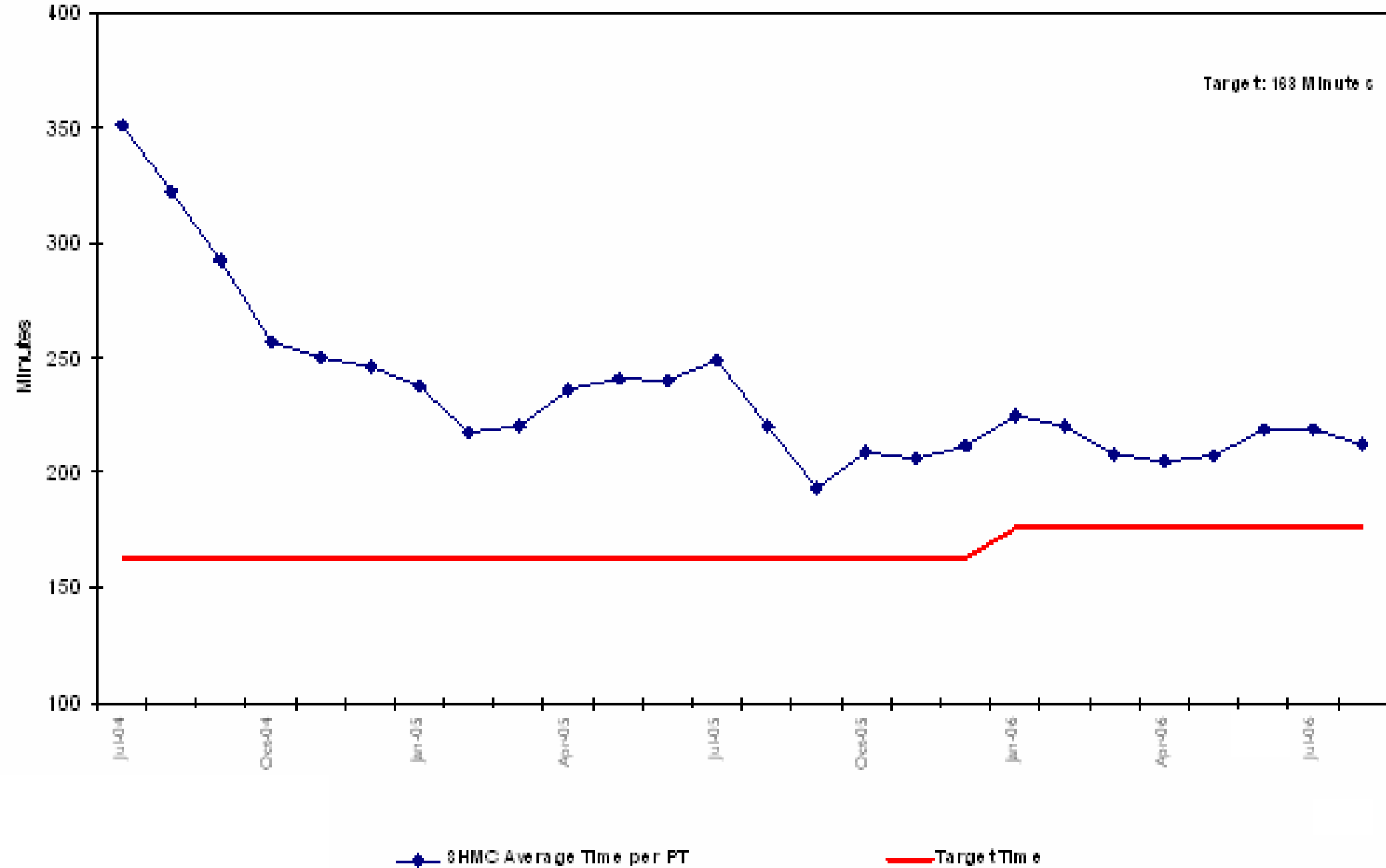
July 2004 - Aug 2006



# Inpatient Discharge Criteria Met to Patient Arrival

July 2004 - Aug 2006

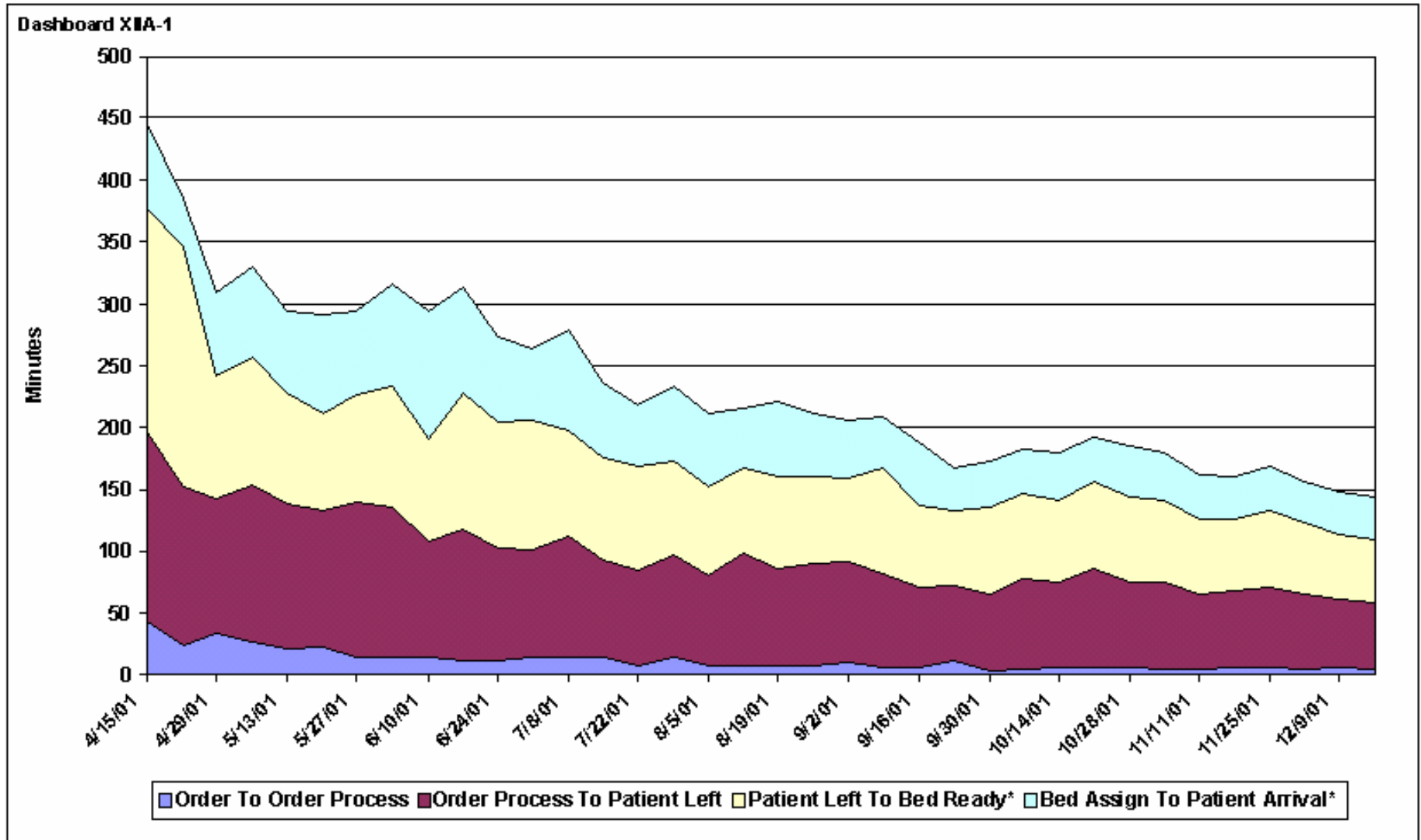
Target: 163 Minutes



# Inpatient Discharge/Admission

## Overall Inpatient Times (Discharge Order To Patient Arrival)

04/15/01 To 12/22/01



# Inpatient Admission

